



KONGSBERG X SERIES

The **most versatile** cutting tables  
for signage, displays & packaging

# Complex production made easy on the industry's most flexible platform

In a world with rapid technology changes, it is important to invest in equipment that offers the flexibility to grow in-line with your business needs.

With the Kongsberg X you can invest in the equipment you need today with the confidence that you can easily upgrade as your business grows. Add new materials, new applications, or more capacity so that you can add volume and enter new market segments.



## Steel construction tabletop

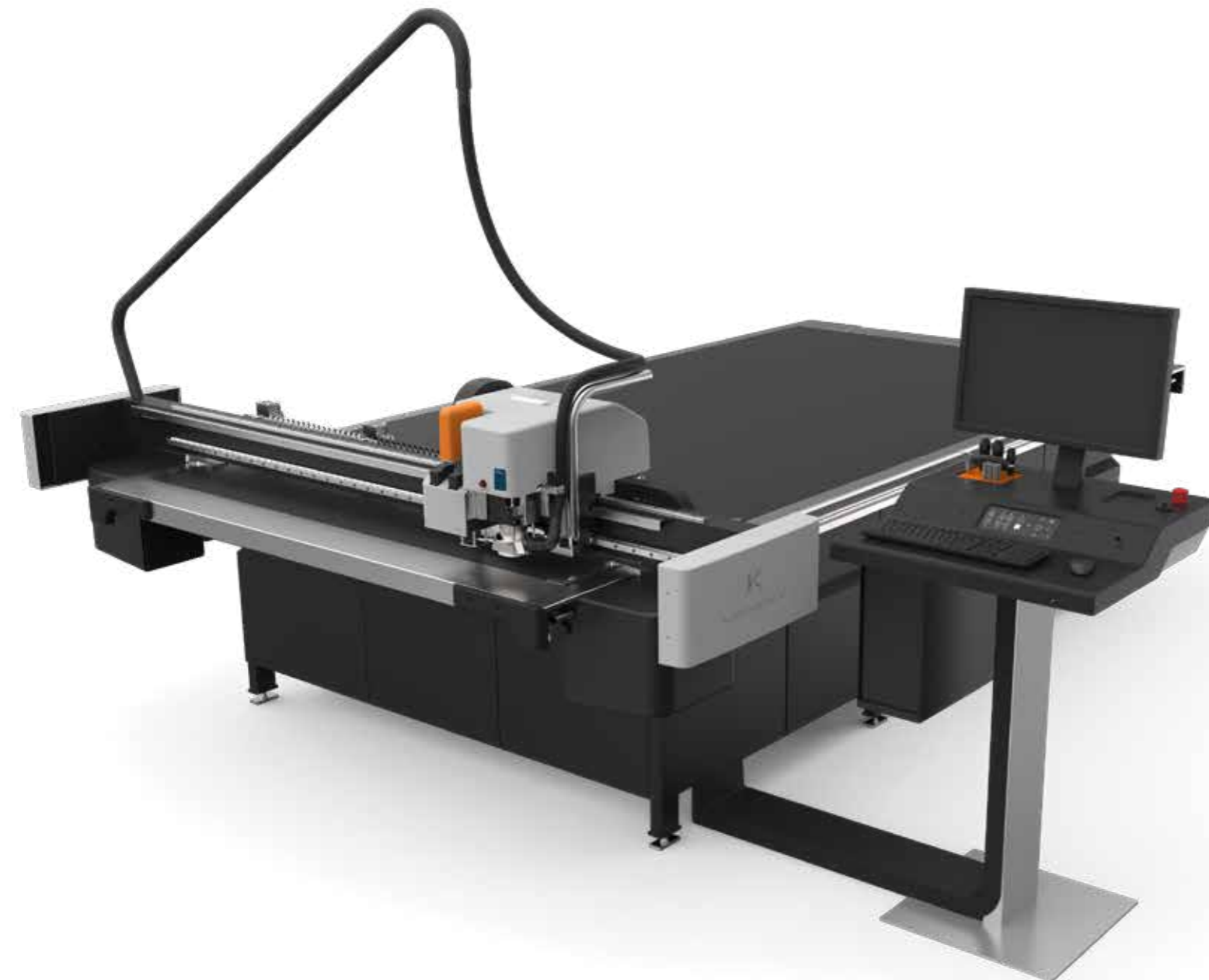
Built upon aerospace technology, the Kongsberg X series features rock-solid Kongsberg tabletop construction that will never warp, even after decades of heavy use.

## Shared Resources

Simplifying is also replacing complex manual tasks with automation. The Shared Resources functionality in i-cut Production Console analyzes incoming files and automatically selects the right tool, the correct table settings and the cutting sequence.

The result? A fast and consistent production, no matter who operates the table. You no longer need to wait for the most experienced operator to produce the complex jobs and ensure consistent results.

With Shared Resources, you can deliver the short turnaround time your customers demand.





## Three application kits for versatility

Whether you produce 2D signs, 3D displays or packages; regardless of the material you work with, the Kongsberg X cutting table will meet the challenge.

The application kits for the Kongsberg X make it easy to pick the right configuration for your business. Additionally, the freedom of upgrade options make the possibilities almost limitless.

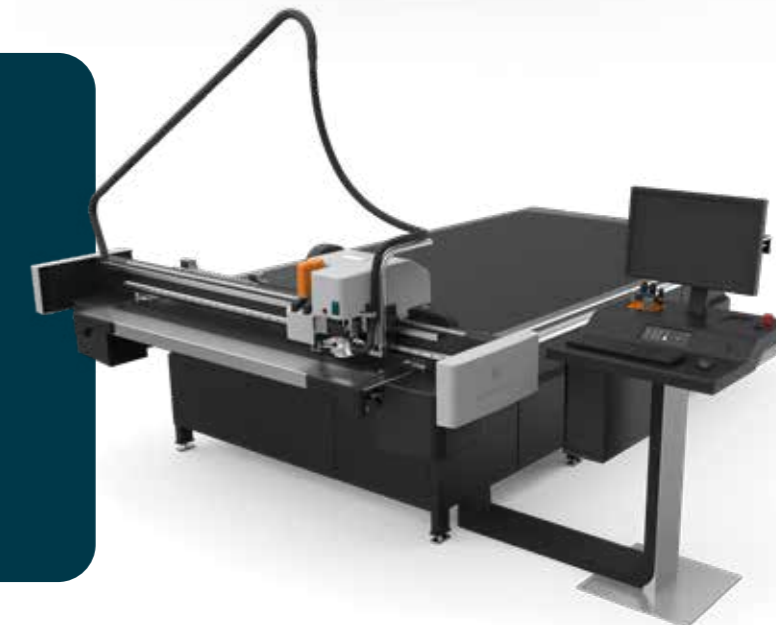
### Kongsberg X Short Run

- For sample making, short run production and other packaging-related tasks
- Production on a wide range of materials with fewer manual tool changes
- Extra fast tool loading, auto recognition and calibration
- Available with felt or PVC underlay



### Kongsberg X Production

- For signage, packaging or displays production
- Great quality for any job or application
- Ability to add a conveyor system to support automated board & roll loading
- A variety of milling options to match your throughput requirements
- Perfect print-to-cut registration



### Kongsberg X Flexo

- Cutting of flexo plates and patches
- Operates back to back with your imaging device, physically and digitally
- Fits in a truly tailored workflow defined with Esko's Digital Flexo team
- Can also be equipped to produce dedicated shipping boxes for your finished plates



## Kongsberg X toolheads: Powerful and versatile

### MultiCUT-HS/HP

The MultiCUT-HS spindle is the perfect option for a shop who want to support a wide variety materials and applications with minimal change over time. The toolhead allows you to jump from kiss cutting vinyl to milling ACM without the need for any manual intervention and still delivers an extremely high-quality finish.

The MultiCUT-HP (High Power) is equipped with a super-strong, liquid-cooled milling spindle delivering several times higher productivity than less powerful alternatives. This is a great choice for shops who need extended milling duty cycles and/or who work extensively with heavy-duty materials (thick sheets of acrylic, wood/MDF and aluminium composite material).

### FlexiHead

The FlexiHead offers highly accurate, powerful cutting on all flexible and thin materials (paper, folding carton, textile, vinyl...). Three configurable tool stations accommodate a full range of standard tool inserts. Specially designed knife and crease tool inserts are available to produce folding cartons with the same high throughput as corrugated jobs.

### PowerHead

The PowerHead excels on heavy duty material (honeycomb boards, triple wall and recycled board...). It features 150 mm (6 in.) diameter crease wheels and additional scoring pressure with the equivalent of 50 kg (110 lbs) down force. The large wheels enable creasing high recycle content boards without breaking the liner. The knife adapter also offers V-notch cutting, enabling mitered and extremely precise folds when producing heavy-duty containers and paper core board displays.

### FoamHead

The FoamHead uses a reciprocating knife to handle foam materials with a maximum thickness of 86 mm (3 3/8 in.). With serrated-edge blades, it can also manage thick honeycomb paperboard. Three blade adapters control the blade length so it can be matched to material thickness. And, it is easy to program accurate partial through cuts thanks to the advanced Z-axis control.

## Start your digital finishing journey with the Kongsberg X Edge

The Kongsberg X Edge is the entry level version of the Kongsberg X.

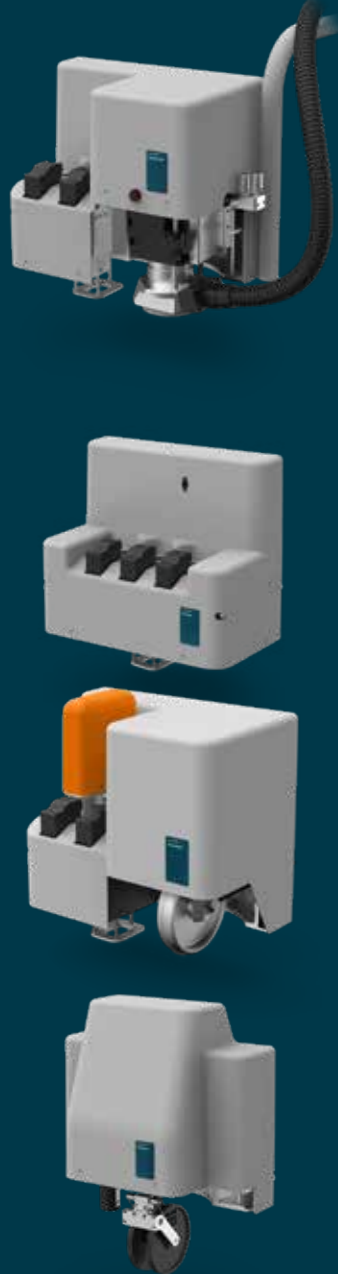
The Kongsberg X Edge delivers speeds of up to 30 m/min with acceleration of 0.3 G and can handle the full spectrum of display, signage and packaging materials.

- High production **speed**
- Exceptional cutting **quality**
- Fully **upgradeable**
- Remarkable **price**

### Add power as your company grows

The Kongsberg X Edge can be upgraded to a full Kongsberg X table.

As your company grows, the Kongsberg X Edge evolves with you and can be easily upgraded in both speed and acceleration to ensure it keeps up with your business demands.





## Tools that make a difference

### Quick and error free tool exchange

Exchanging tools on a Kongsberg X is fast, simple and error proof. Just insert a tool and hit Start. Every tool is identified by a unique bar code with tool parameters stored in memory, preventing any operator errors.

### Psaligraphy tool for the finest details

The Psaligraphy knife tool easily cuts any intricate detail in paper and folding carton, at a unprecedented quality level. Make products like greeting cards, invitation cards, promotional items and folding carton samples with high precision, burr-free cuts.

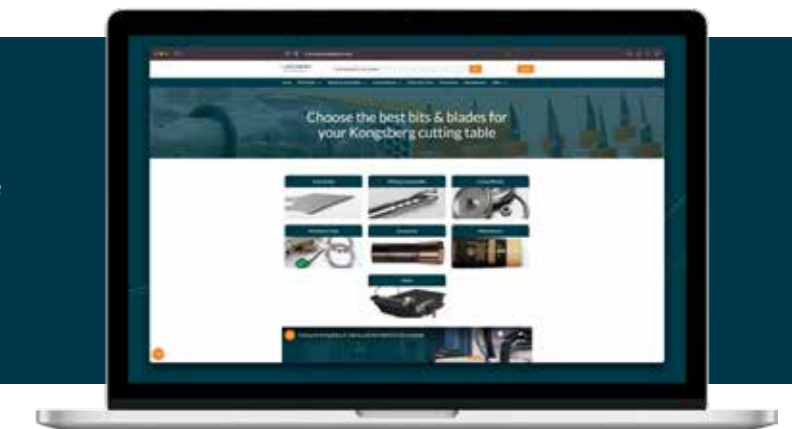
### CorruSpeed tool for the best quality

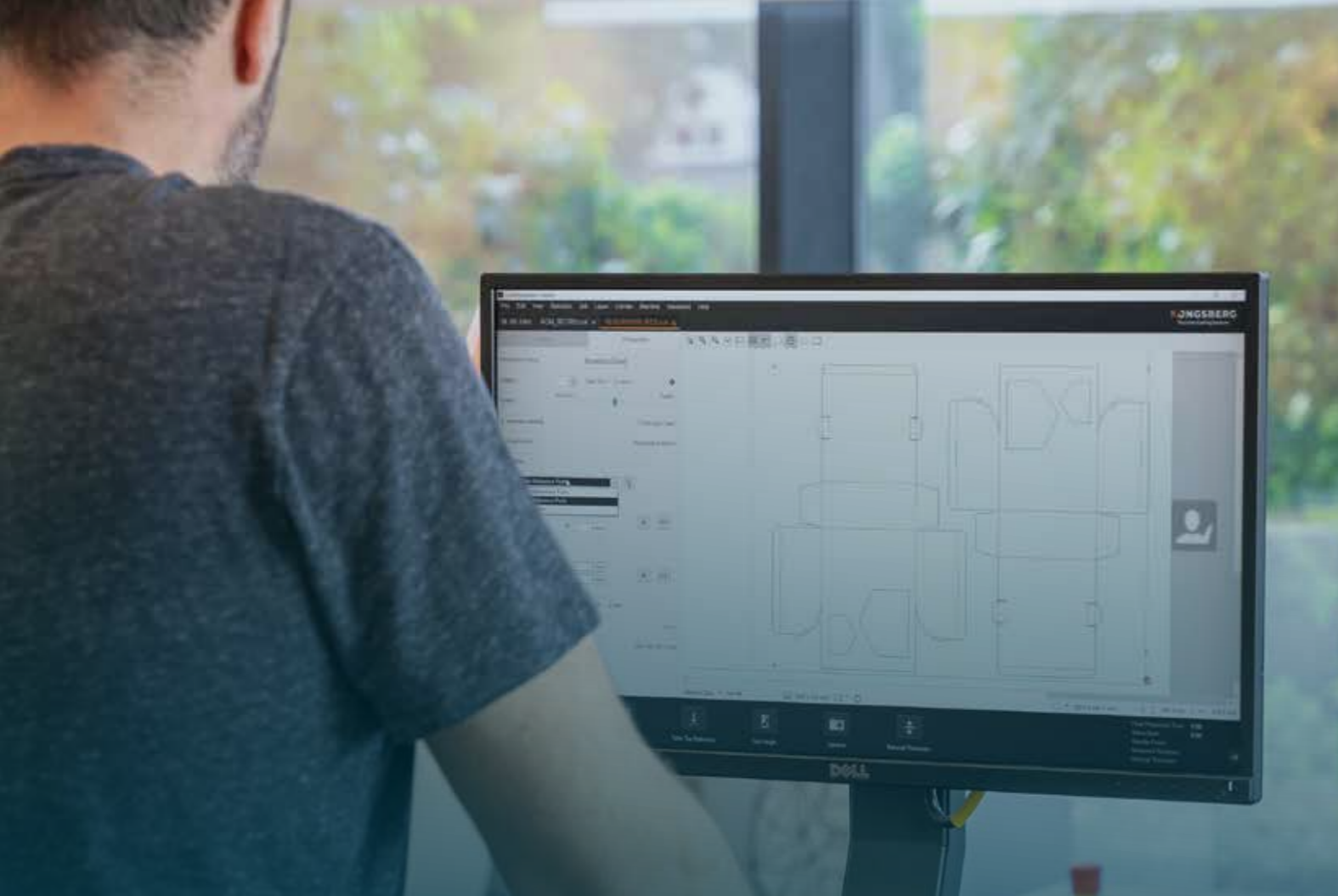
The CorruSpeed knife tool is a high impact tool for corrugated materials. It cuts without oscillating and delivers amazing quality at full machine speed. Corruspeed handles material thickness up to BC flute.

### Buy bits & blades online

Quickly order the right bits and blades for the right material on the Kongsberg Store.

[www.kongsbergstore.com](http://www.kongsbergstore.com)





## An unsurpassed user experience

The i-cut Production Console, the front-end for the Kongsberg X, works with a graphical icon-based communication which allows the operator to supervise production from a distance. A separate operator login ensures personalized language settings and job list management.

### Barcode production

One-piece-flow by barcode production ensures consistent production and final quality. Especially recommended when several unique jobs are lined up. The camera reads barcodes and automatically applies the correct tooling and production settings.

- QR
- Data Matrix
- Code39

### My Job List

Full editing rights from estimating and production planning to job countdown increase efficiency and ensure on time delivery. Previous jobs can be recalled from history and reproduced exactly as before with the click of a button.

### Roll automation

The Kongsberg Roll Feeder and Take Up Unit, in combination with the collector basket, makes roll-to-roll workflows easier. The unit makes finishing digitally printed jobs on rolls and collecting waste very straightforward.

The Take Up Unit is simple to install for any Kongsberg table equipped with a conveyor feed system. The unit is hassle-free to operate and can easily be moved away when it's not needed.

### MultiZone production

MultiZone production allows you to load two sheets at the same time and maximize the production capacity on your Kongsberg cutting table without expensive automation add-ons.

The MultiZone Operation Mode enables the operator to prepare one zone while the table processes the other, with automatic change-over when one zone is completed, vastly increasing overall productivity and throughput.

An optional zone control panel can be mounted on the table's side cover, providing a time-saving way of acknowledging that the zone is ready for production and also manual vacuum hold-down control.

# Technical specifications

	X20	X22	X24	X44	X46	X48	
Work area, all tools	1680 x 1270 66 x 50	1680 x 2190 66 x 86	1680 x 3200 66 x 126	2210 x 3200 87 x 126	2210 x 4800 87 x 189	2210 x 6550 87 x 258	mm in.
Max. material size, without conveyor feed	1740 x 1750 68 x 69	1740 x 2570 68 x 101	1740 x 3575 68 x 140	2270 x 3575 89 x 140	2270 x 5250 89 x 206	2270 x 6930 89 x 273	mm in.
Max. material width, with conveyor feed	1680 66			2210 87		n/a	mm in.
Overall dimensions, with front panel	2780 x 2450 109½ x 96½	2780 x 3040 109½ x 119½	2780 x 4050 109½ x 159½	3300 x 4050 130½ x 159½	n/a	n/a	mm in.
Overall dimensions, with RWS <sup>1,2</sup>	3600 x 2160 141¾ x 85	3600 x 2950 141¾ x 116	3600 x 3960 141¾ x 156	4070 x 3960 160¾ x 156	4070 x 5640 160¾ x 222	4070 x 7320 160¾ x 288¾	mm in.
Weight	720 1590	830 1830	1085 2395	1250 2755	1730 3820	2215 4885	kg lbs
Position accuracy <sup>3</sup>	± 200 ± .0078		± 250 ± .0098	± 300 ± .012	± 350 ± .014	± 400 ± .016	µm in.
Repeatability	± 50 ± .0019			± 60 ± .0023			µm in.
Max. speed	50 m/min - 833 mm/sec - 33 IPS						
Max. speed (Edge)	30 m/min - 500 mm/sec - 20 IPS						
Max. acceleration <sup>4</sup>	5.6 m/s <sup>2</sup> - 0.56 G			5.4 m/s <sup>2</sup> - 0.54 G			
Max. acceleration (Edge)	3 m/s <sup>2</sup> - 0.3 G						
Vertical tool force	Standard tool stations: 220 N PowerHead crease station: 500 N						
Vacuum sections	2			4			
Standard traverse clearance <sup>5</sup>	50 mm (2 in.) or 95 mm (3¾ in.), depends on the selected application kit and/or model size						
Optional traverse clearance <sup>5</sup>	95 mm (3¾ in.) is available as an option for models featuring a 50 mm (2 in.) clearance						

<sup>(1)</sup> Measured with revolving workstation in its standard position

<sup>(2)</sup> Conveyor feed option will add marginally to the length dimension

<sup>(3)</sup> Applies across total work area, with standard traverse clearance

<sup>(4)</sup> May be reduced with certain tool- and configuration combinations

<sup>(5)</sup> Measured without cutting underlay. Max. cutting thickness is tool-dependent

**Europe** Kortrijksesteenweg 1087-B, 9051 Gent (BE) | [info.eur@kongsbergsystems.com](mailto:info.eur@kongsbergsystems.com)

**Americas** 1983 Byers Road, Miamisburg, OH 45342 (US) | [info.na@kongsbergsystems.com](mailto:info.na@kongsbergsystems.com)

**Asia Pacific** 100 TRAS Street, #16-01 100 AM, Singapore 079027 (SG) | [info.apac@kongsbergsystems.com](mailto:info.apac@kongsbergsystems.com)